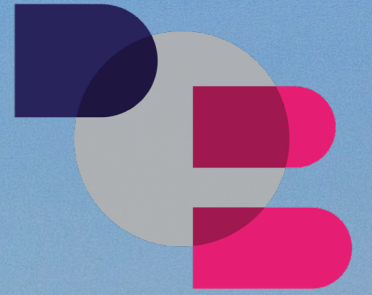




PLATINUM JUBILEE

BUSINESS PARK



20 UNITS ARRANGED OVER 7 BLOCKS
(16 LIGHT INDUSTRIAL AND 4 GROUND & FIRST FLOOR OFFICE UNITS)

RANGE FROM 93 SQ M TO 331 SQ M
(1,001 SQ FT TO 3,563 SQ FT)

HOPCLOVER WAY, RINGWOOD, BH24 3FW

New Class B2, B8 and E business space
under construction now.



**-AVAILABLE NOW-
ONLY 6 UNITS REMAINING**



PLATINUM JUBILEE
BUSINESS PARK



20 UNITS TO LET
93 SQ M TO 331 SQ M
AVAILABLE NOW



PLATINUM JUBILEE
BUSINESS PARK

SPECIFICATIONS

Platinum Jubilee Business Park is a new prestigious industrial and business scheme of 3.59 acres/ 1.45 hectares, located in the market town of Ringwood. The scheme consists of 20 units for B1/B2/ B8 uses and 11,020 sq ft (NIA) of high grade offices.

- Planning:** Planning is for B1/B2 and B8 uses
- Term:** The units will be available on new full repairing insuring leases, for a term to be agreed, including periodic rent reviews.
- Rent:** On application
- Legal Costs:** Each party to be responsible for their own legal costs incurred in the transaction



ELECTRIC VEHICLE CHARGING POINTS



BREEAM VERY GOOD



6.52 CLEAR EAVES HEIGHT



STEEL PORTAL FRAMES



4075MM ELECTRIC LOADING DOORS



EXCELLENT PARKING PROVISION

Service Charge for shared facilities

 **PLATINUM JUBILEE**
BUSINESS PARK



ACCOMMODATION



AREA SCHEDULE GIA

Block	SQ M	SQ F	Parking Spaces
A UNIT A1	331.00	3,563	7
A UNIT A2	331.00	3,563	6
B UNIT B1	256.00	2,756	7
B UNIT B2	256.00	2,756	7
B UNIT B3	256.00	2,756	7
B UNIT B4	256.00	2,756	7
B UNIT B5	256.00	2,756	7
C UNIT C1	189.00	2,034	5
C UNIT C2	189.00	2,034	5
C UNIT C3	187.50	2,018	5
C UNIT C4	189.00	2,034	5
C UNIT C5	189.00	2,034	5
D UNIT D1	256.00	2,756	7
D UNIT D2	256.00	2,756	7
D UNIT D3	256.00	2,756	7
D UNIT D4	256.00	2,756	7
D UNIT D5	256.00	2,756	7
F GF	256.00	2,756	7
F FF	256.00	2,756	7
G UNIT G1	256.00	2,756	7
G UNIT G2	256.00	2,756	7

LOCATION

Platinum Jubilee Business Park is a new prestige industrial and business scheme of 3.59 acres/ 1.45 hectares, located in the market town of Ringwood.

Ringwood is located on the western border of Hampshire and Dorset and has a population of about 14,000. The main A31 Southampton to Bournemouth trunk road runs through the northern part of the Town. Ringwood is located on the western edge of the New Forest National Park.

Nearby are a range of local occupiers, Avon Project Services, AWRG, Quicknet UK, N G Enterprises, New Forest School of Dance including many more.



The site is accessed via the A31, which joins the M27 at Junction 1 which is approximately 10 miles away.



Bournemouth Railway station is approximately 12 miles away.



Bournemouth International Airport is approximately 8 miles away.



CONTACT



Ben Simpkin
bsimpkin@primmeroldsbas.co.uk
07871 373 069
01202 887 555

Development by
 **New Forest**
DISTRICT COUNCIL



SCAN QR CODE TO SEE AERIAL
DRONE VIDEO